



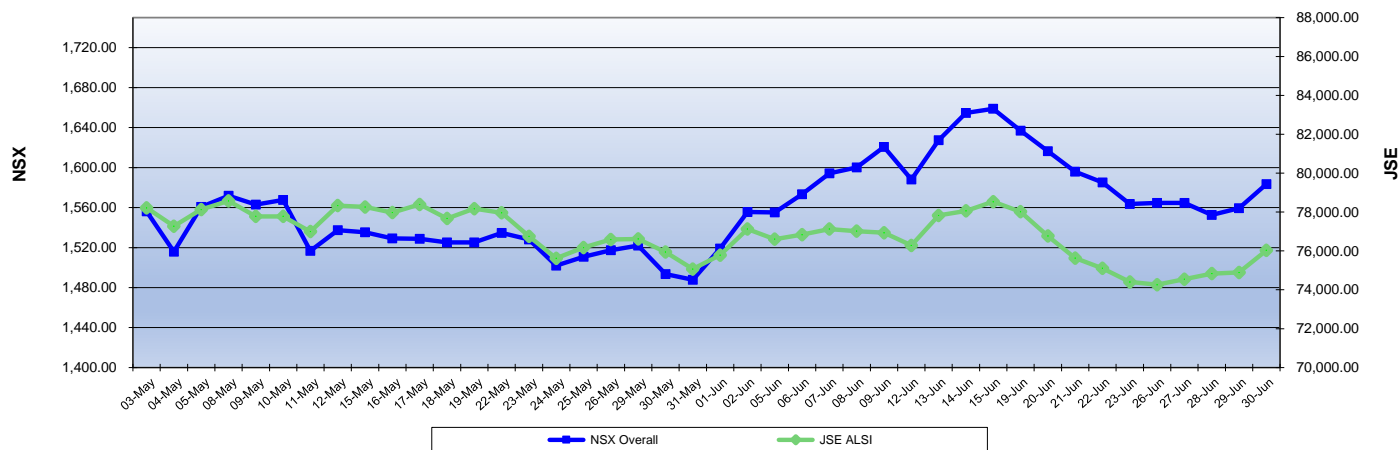
NAMIBIAN STOCK EXCHANGE

Weekly Market Index

26 - 30 June 2023

| FTSE Index Code | Major/Sector Markets | Capital Index (NAD) Today | Capital Index (NAD) Prev. Day | Change | % Change | Actual Dividend Yield | Movement since Dec 2022 | Dec 2022 | High 2023 | Low 2023 |
|-----------------|------------------------|---------------------------|-------------------------------|----------|----------|-----------------------|-------------------------|-----------|-----------|-----------|
| (ALSH) J203 | JSE All Share Index | 76,027.80 | 74,402.90 | 1,624.90 | 2.18% | - | 4.08% | 73,048.60 | 80,791.40 | 72,527.90 |
| N098 | Overall | 1,583.43 | 1,563.64 | 19.79 | 1.27% | 5.94 | -2.92% | 1,631.05 | 1,804.92 | 1,487.83 |
| N099 | Local | 664.68 | 652.17 | 12.51 | 1.92% | 6.87 | 31.09% | 507.05 | 664.68 | 507.05 |
| N15 | Telecommunications | 242.23 | 242.23 | - | 0.00% | 10.12 | -0.32% | 243.01 | 244.31 | 241.85 |
| N20 | Health Care | | | - | 0.00% | | -100.00% | 61.90 | 72.79 | 61.66 |
| N30 | Financials | 492.25 | 480.87 | 11.38 | 2.37% | 6.12 | 9.65% | 448.91 | 499.42 | 429.90 |
| N35 | Real Estate | 1,408.52 | 1,471.66 | (63.14) | -4.29% | 9.06 | -4.65% | 1,477.28 | 1,536.83 | 1,347.15 |
| N40 | Consumer Discretionary | 2,665.04 | 2,546.59 | 118.45 | 4.65% | 9.28 | 2.94% | 2,588.91 | 3,229.91 | 2,221.16 |
| N45 | Consumer Staples | 1,131.54 | 1,129.07 | 2.48 | 0.22% | 2.81 | 1.83% | 1,111.17 | 1,213.61 | 989.02 |
| N55 | Basic Materials | 559.04 | 558.47 | 0.57 | 0.10% | 6.05 | -16.57% | 670.04 | 774.59 | 546.67 |
| N65 | Utilities | 998.89 | 998.89 | - | 0.00% | - | -0.11% | 1,000.00 | 1,000.00 | 998.89 |

NSX Overall & JSE ALSH Indices



NSX Local Index

