



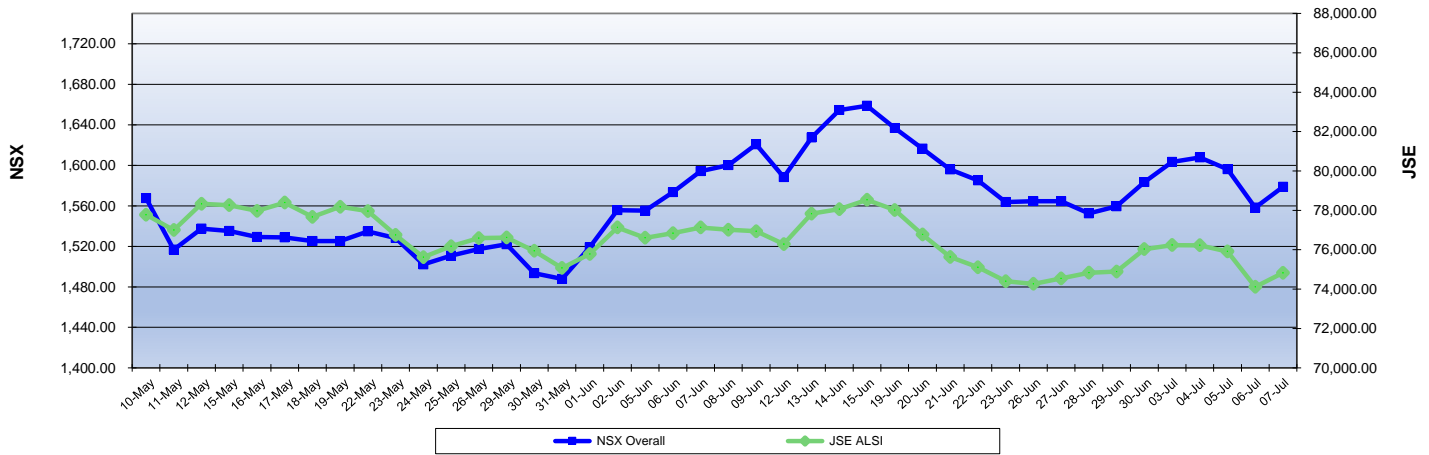
NAMIBIAN STOCK EXCHANGE

Weekly Market Index

03 - 07 July 2023

| FTSE Index Code | Major/Sector Markets | Capital Index (NAD) Today | Capital Index (NAD) Prev. Day | Change | % Change | Actual Dividend Yield | Movement since Dec 2022 | Dec 2022 | High 2023 | Low 2023 |
|-----------------|------------------------|---------------------------|-------------------------------|------------|----------|-----------------------|-------------------------|-----------|-----------|-----------|
| (ALSH) J203 | JSE All Share Index | 74,823.00 | 76,027.80 | (1,204.80) | -1.58% | - | 2.43% | 73,048.60 | 80,791.40 | 72,527.90 |
| N098 | Overall | 1,578.85 | 1,583.43 | (4.57) | -0.29% | 5.96 | -3.20% | 1,631.05 | 1,804.92 | 1,487.83 |
| N099 | Local | 664.59 | 664.68 | (0.09) | -0.01% | 6.87 | 31.07% | 507.05 | 664.97 | 507.05 |
| N15 | Telecommunications | 242.49 | 242.23 | 0.27 | 0.11% | 10.11 | -0.21% | 243.01 | 244.31 | 241.85 |
| N20 | Health Care | | | - | 0.00% | | -100.00% | 61.90 | 72.79 | 61.66 |
| N30 | Financials | 492.35 | 492.25 | 0.10 | 0.02% | 6.12 | 9.68% | 448.91 | 499.42 | 429.90 |
| N35 | Real Estate | 1,370.08 | 1,408.52 | (38.44) | -2.73% | 9.31 | -7.26% | 1,477.28 | 1,536.83 | 1,347.15 |
| N40 | Consumer Discretionary | 2,678.67 | 2,665.04 | 13.63 | 0.51% | 9.23 | 3.47% | 2,588.91 | 3,229.91 | 2,221.16 |
| N45 | Consumer Staples | 1,106.36 | 1,131.54 | (25.19) | -2.23% | 2.87 | -0.43% | 1,111.17 | 1,213.61 | 989.02 |
| N55 | Basic Materials | 557.08 | 559.04 | (1.96) | -0.35% | 6.08 | -16.86% | 670.04 | 774.59 | 546.39 |
| N65 | Utilities | 998.89 | 998.89 | - | 0.00% | - | -0.11% | 1,000.00 | 1,000.00 | 998.89 |

NSX Overall & JSE ALSH Indices



NSX Local Index

